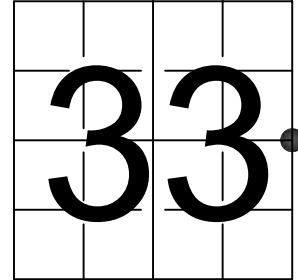


U S PUBLIC LAND SURVEY MONUMENT RECORD

NOTE: This form is intended and designed to fulfill all requirements of Wisconsin Administrative Code, Chapter A-E 7.08 U.S. Public Land Survey Monument Record (3) (a-i)

A-E 7.08(3)(a) Identity of corner:
 EAST 1/4 CORNER SECTION 33,
 TOWNSHIP 34 NORTH,
 RANGE 06 EAST OF THE 4TH PM,
 TOWN OF BRADLEY,
 COUNTY OF LINCOLN

WISCORS - LINCOLN COUNTY
 N: 198,369.794 USft (198,369.762)
 E: 380,787.785 USft (380,787.791)
 Datum: NAD83 (2011)
 GNSS Method RTN - Direct
 GNSS Control WISCORS VRS



The coordinate value shown has been verified by the average of two or more GPS observations at a markedly different time. Coordinates shown in parenthesis are provided by Lincoln County.

A-E 7.08(3)(b)

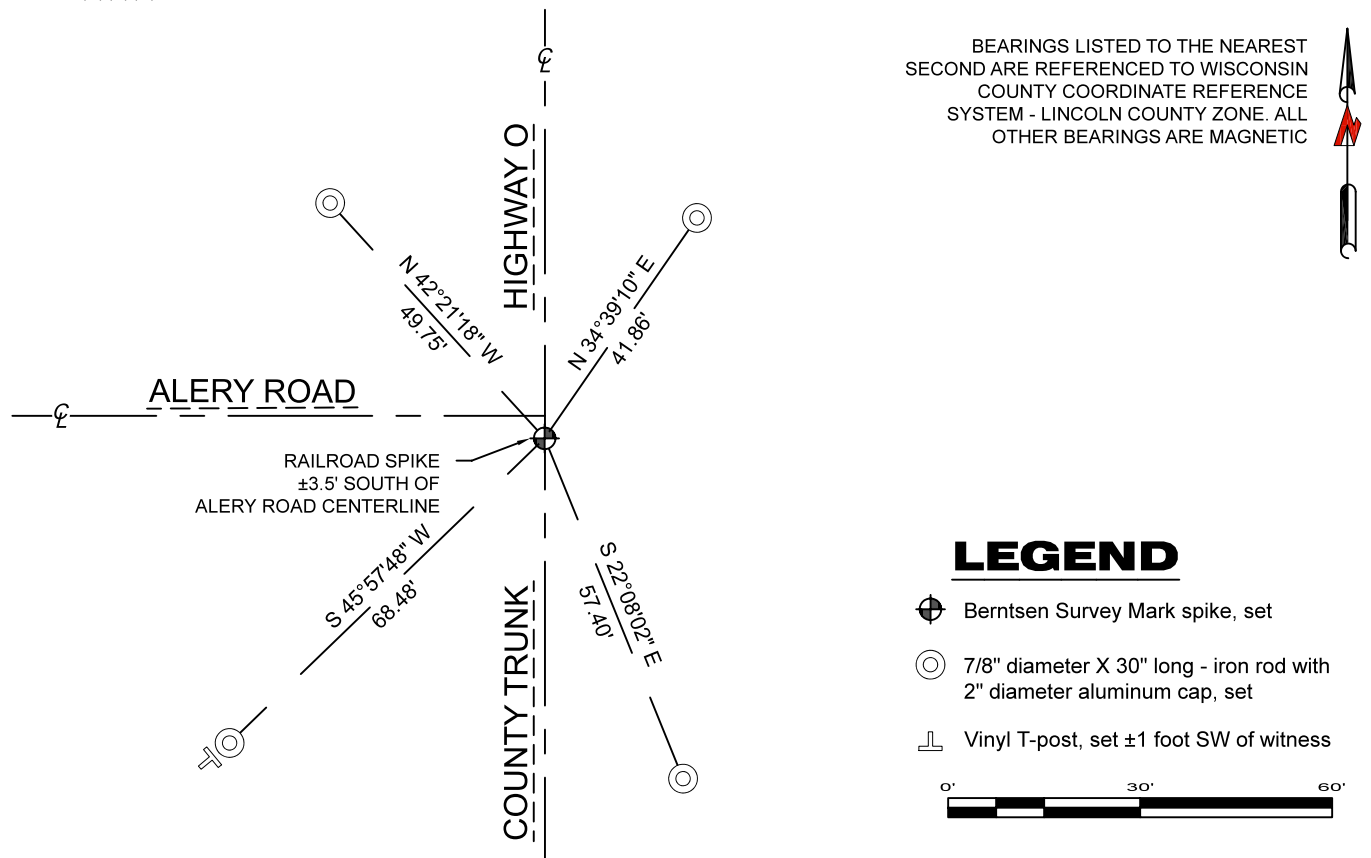
Original Surveyor: Jackson L. Prentice

Date of Original Survey	Commenced:	December 24, 1854	Original Accessories:	
	Completed:	January 5, 1855	Sugar Maple	19 N 69° W 44 Links
			Elm	10 N 86° E 18 Links

October 17, 2005 - Surveyor 2142 - David A. Renaud - indicates this position as "N198369.762, E380787.7920" on Map L403A.

June 14, 2022 - While performing the 2022 Lincoln County PLSS Corner Remonumentation and GPS Services project, I went to the coordinate position provided by Lincoln County, I made a careful search of the area and found no evidence of the corner or witnesses. The County provided location is ±3.5 feet south of Alery Road centerline, and on the centerline of C.T.H. E. Under the direction of Lincoln County, I restored the corner using coordinates provided by Lincoln County and set a Berntsen Survey Mark steel spike 3" long with a 1" diameter dimpled head, and established 4 new reference monuments as shown below.

A-E 7.08(3)(c)(d) Plan view of corner with references to at least 4 witness monuments.



A-E 7.08(3)(e) 1855 Surveyor set a post, 2005 Surveyor had coordinates. I set a Berntsen Survey Mark steel spike at coordinates provided by Lincoln County.

A-E 7.08(3)(f) I restored the corner through ACCEPTANCE OF AN OBLITERATED LOCATION.

A-E 7.08(3)(g)(h) This corner was not determined through lost-corner-proportionate methods.

A-E 7.08(3)(i) I, Jeffrey L. DeMuth, Professional Land Surveyor No. S-2656, hereby certify that the corner location on this record was determined by the Lincoln County Surveyor, and the monuments found or set as shown hereon were measured by me or under my direction and control, and that this U.S. Public Land Survey Monument Record is correct and complete to the best of my knowledge, and belief.



 SIGNATURE September 16, 2022
DATE