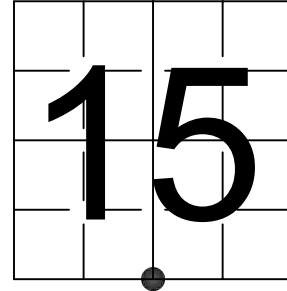


# U S PUBLIC LAND SURVEY MONUMENT RECORD

NOTE: This form is intended and designed to fulfill all requirements of Wisconsin Administrative Code, Chapter A-E 7.08 U.S. Public Land Survey Monument Record (3) (a-i)

A-E 7.08(3)(a) Identity of corner:  
 SOUTH 1/4 CORNER SECTION 15,  
 TOWNSHIP 34 NORTH,  
 RANGE 06 EAST OF THE 4TH PM,  
 TOWN OF BRADLEY,  
 COUNTY OF LINCOLN

WISCORS - LINCOLN COUNTY  
 N: 211,559.458 USft (211,559.489)  
 E: 383,415.359 USft (383,415.347)  
 Datum: NAD83 (2011)  
 GNSS Method RTN - Direct  
 GNSS Control WISCORS VRS



The coordinate value shown has been verified by the average of two or more GPS observations at a markedly different time. Coordinates shown in parenthesis are provided by Lincoln County.

A-E 7.08(3)(b)

Original Surveyor: Jackson L. Prentice

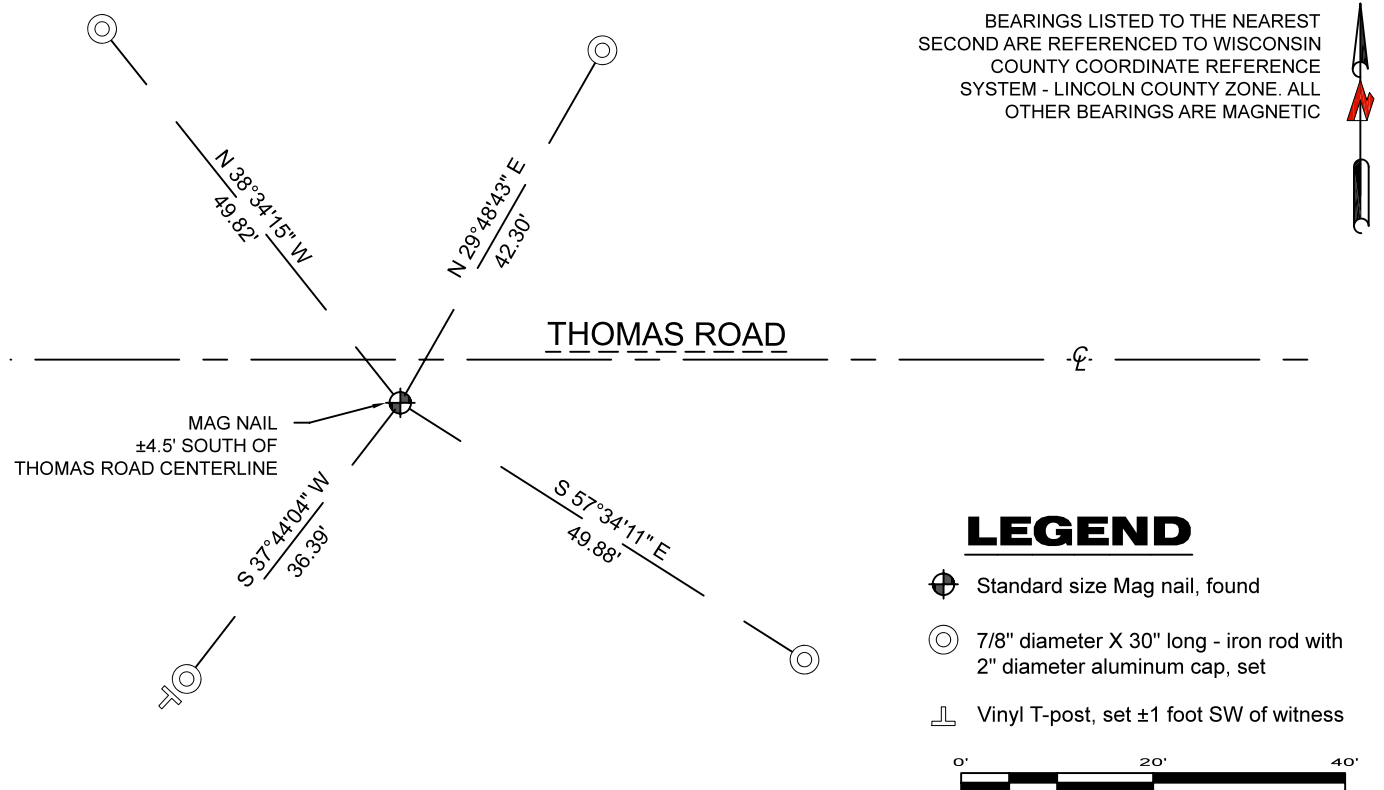
Date of Original Survey Commenced: December 24, 1854  
 Completed: January 5, 1855

Original Accessories:  
 Pine 11 S 40° E 10 Links  
 Aspen 13 N 20° E 18 Links

October 17, 2005 - Surveyor 2142 - David A. Renaud - indicates this position as "N211557.2910, E383392.1500" on Map L403A & L405B.

May 24, 2022 - While performing the 2022 Lincoln County PLSS Corner Remonumentation and GPS Services project, I found a standard size Mag nail near the computed position provided by Lincoln County. The monument is ±4.5 feet south of the centerline of Thomas Road. I established 4 new reference monuments as shown below.

A-E 7.08(3)(c)(d) Plan view of corner with references to at least 4 witness monuments.



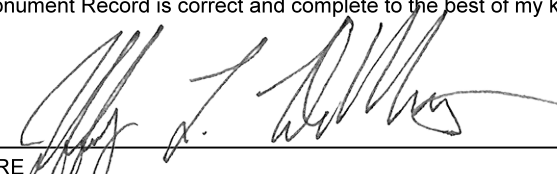
A-E 7.08(3)(e) 1855 Surveyor set a post, 2005 Surveyor had coordinates. I found a standard size Mag nail.

A-E 7.08(3)(f) I accept this monument as a FOUND PERPETUATED LOCATION of the corner.

A-E 7.08(3)(g)(h) This corner was not determined through lost-corner-proportionate methods.

A-E 7.08(3)(i) I, Jeffrey L. DeMuth, Professional Land Surveyor No. S-2656, hereby certify that the corner location on this record was determined by the Lincoln County Surveyor, and the monuments found or set as shown hereon were measured by me or under my direction and control, and that this U.S. Public Land Survey Monument Record is correct and complete to the best of my knowledge, and belief.



SIGNATURE  DATE September 16, 2022