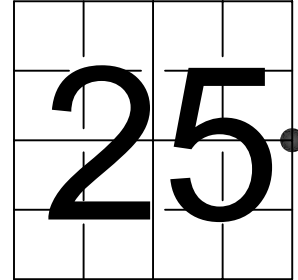


U S PUBLIC LAND SURVEY MONUMENT RECORD

NOTE: This form is intended and designed to fulfill all requirements of Wisconsin Administrative Code, Chapter A-E 7.08 U.S. Public Land Survey Monument Record (3) (a-i)

A-E 7.08(3)(a) Identity of corner:
 EAST 1/4 CORNER SECTION 25,
 TOWNSHIP 34 NORTH,
 RANGE 05 EAST OF THE 4TH PM,
 TOWN OF TOMAHAWK,
 COUNTY OF LINCOLN

WISCRS - LINCOLN COUNTY
 N: 203,606.049 USft (203,606.124)
 E: 364,949.767 USft (364,949.794)
 Datum: NAD83 (2011)
 GNSS Method RTN - Direct
 GNSS Control WISCORS VRS



The coordinate value shown has been verified by the average of two or more GPS observations at a markedly different time. Coordinates shown in parenthesis are provided by Lincoln County.

A-E 7.08(3)(b)

Original Surveyor: James M. Marsh

Date of Original Survey Commenced: August 12, 1851
 Completed: August 18, 1851

Original Accessories:
 Spruce 6 S 2° E 13 Links
 Spruce 6 S 28° W 36 Links
 Spruce 6 N 12° W 41 Links
 Spruce 6 N 50° E 13 Links

January 8, 2002 - Surveyor 2095 - Thomas A. Radenz - indicates this position as "To be set by County Surveyor - N203606.1250, E364949.7940" on Section Summary - Section 30 Township 34N, Range 6E.

October 17, 2005 - Surveyor 2142 - David A. Renaud - indicates this position as "N203606.1250, E364949.7940" on Map L403A & L405B.

December 20, 2012 - Surveyor 2729 - Gregory S. Maines

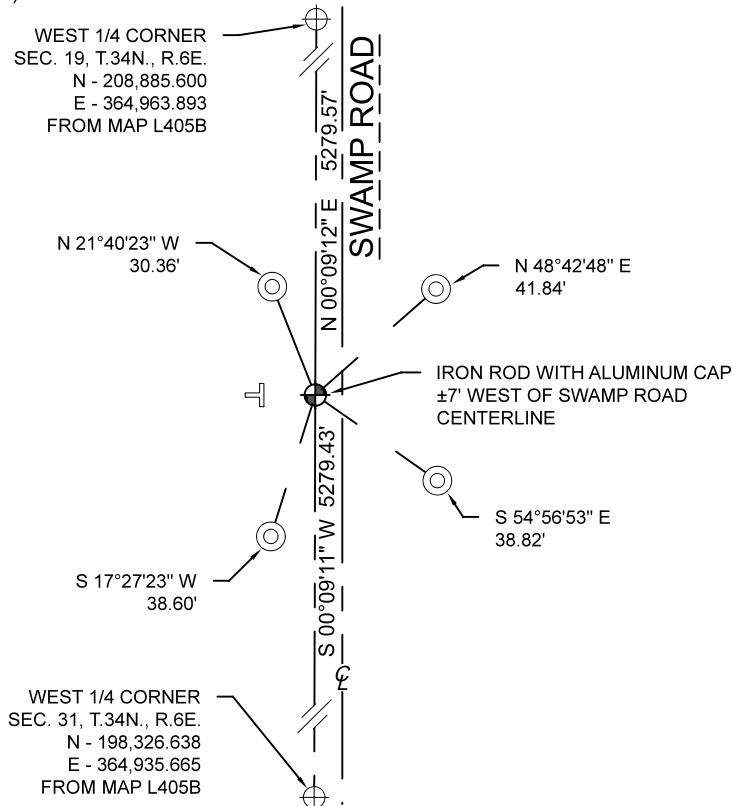
indicates this position as "coordinates provided by Lincoln County" on Map L492A-B.

indicates this position as "coordinates provided by Lincoln County - N203606.12, E364949.79" on Section Summary - Section 25, T 34 N, R 5 E.

July 19, 2022 - While performing the 2022 Lincoln County PLSS Corner Remonumentation and GPS Services project, I went to the coordinate position provided by Lincoln County, I made a careful search of the area and found no evidence of the corner or witnesses. The County provided location is ±9 feet west of the Swamp Road centerline.

Under the direction of Lincoln County, I restored the corner using coordinates provided by Lincoln County and set a 7/8" diameter X 30" long - iron rod with 2" diameter aluminum cap. I established 4 new reference monuments as shown below.

A-E 7.08(3)(c)(d) Plan view of corner with references to at least 4 witness monuments.

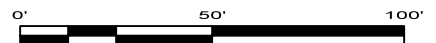


BEARINGS LISTED TO THE NEAREST SECOND ARE REFERENCED TO WISCONSIN COUNTY COORDINATE REFERENCE SYSTEM - LINCOLN COUNTY ZONE. ALL OTHER BEARINGS ARE MAGNETIC



LEGEND

- 7/8" diameter X 30" long - iron rod with 2" diameter aluminum cap, set
- 7/8" diameter X 30" long - iron rod with 2" diameter aluminum cap, set
- Vinyl T-post, set 13.4' west of corner



A-E 7.08(3)(e) 1851 Surveyor set a post, 2002, 2005, and 2012 Surveyors had coordinates. I set a 7/8" diameter iron rod with 2" diameter aluminum cap at coordinates provided by Lincoln County.

A-E 7.08(3)(f) This corner was not restored through acceptance of an obliterated location or a found perpetuated location.

A-E 7.08(3)(g)(h) The position of this corner was determined through LOST-CORNER-PROPORTIONATE METHODS, calculations by others, corner position provided by Lincoln County.

A-E 7.08(3)(i) I, Jeffrey L. DeMuth, Professional Land Surveyor No. S-2656, hereby certify that the corner location on this record was determined by the Lincoln County Surveyor, and the monuments found or set as shown hereon were measured by me or under my direction and control, and that this U.S. Public Land Survey Monument Record is correct and complete to the best of my knowledge, and belief.

Handwritten signature of Jeffrey L. DeMuth

September 16, 2022

SIGNATURE

DATE

