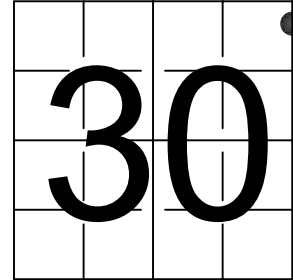


U S PUBLIC LAND SURVEY MONUMENT RECORD

NOTE: This form is intended and designed to fulfill all requirements of Wisconsin Administrative Code, Chapter A-E 7.08 U.S. Public Land Survey Monument Record (3) (a-i)

A-E 7.08(3)(a) Identity of corner:
MEANDER CORNER EAST LINE OF
SECTION 30, SOUTH OF RIVER,
TOWNSHIP 33 NORTH,
RANGE 06 EAST OF THE 4TH PM,
TOWN OF ROCK FALLS,
COUNTY OF LINCOLN

WISCORS - LINCOLN COUNTY
N: 174,572.705 USft (174,572.910)
E: 370,060.524 USft (370,060.508)
Datum: NAD83 (2011)
GNSS Method RTN - Direct
GNSS Control WISCORS VRS



The coordinate value shown has been verified by the average of two or more GPS observations at a markedly different time. Coordinates shown in parenthesis are provided by Lincoln County.

A-E 7.08(3)(b)

Original Surveyor: Jackson L. Prentice

Date of Original Survey	Commenced:	October 27, 1852	Original Accessories:			
	Completed:	November 9, 1852	Hemlock	12	N 71° E	58 Links
			Hemlock	16	S 60° W	1.4 Links

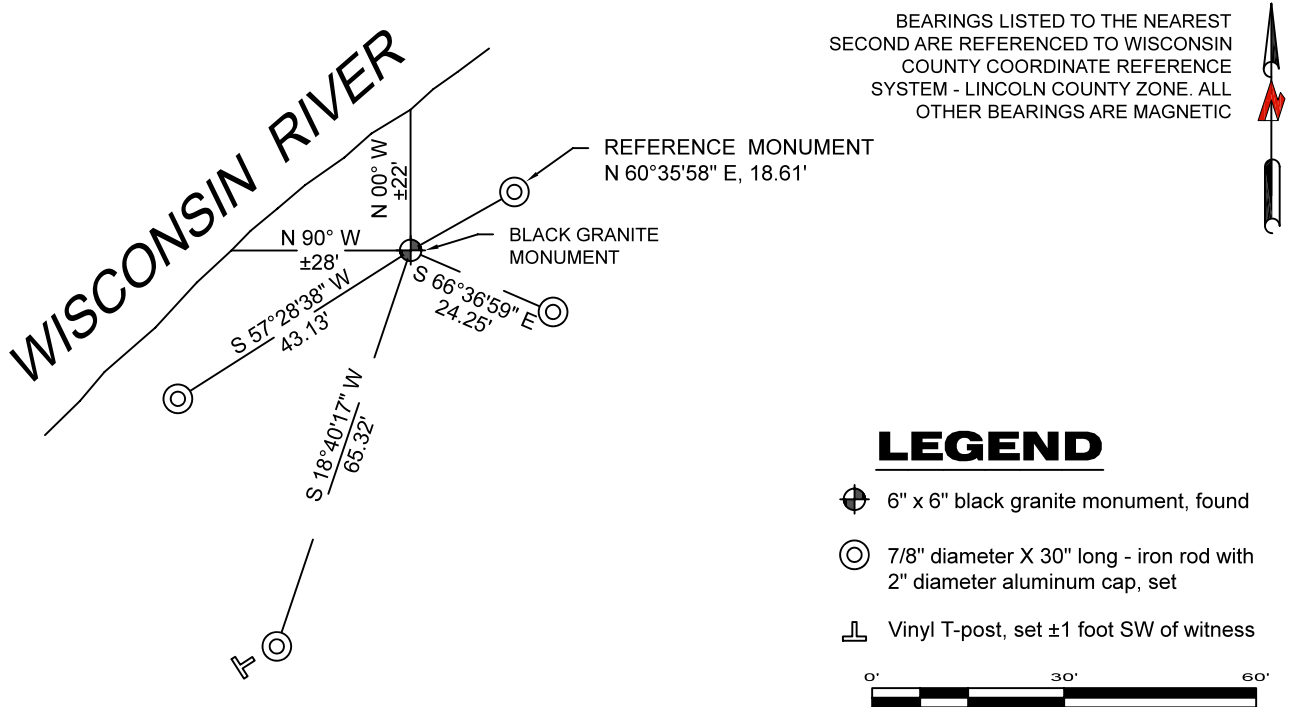
1941 - Francis X. Fox - Survey of TWP., 32 & 33 N. ~ R.6 R. Town of Rock Falls - indicates "set corners to all forties on all quarter & section lines" on Map M136A.

August 1972 - Surveyor 1040 - Robert H. Winat - Indicates this position as "stone monument found" on Map M3A.

June 12, 2015 - Surveyor 1523 - Todd J. Loftus - indicates this position as "found granite monument " on Map S576A.

June 29, 2022 - While performing the 2022 Lincoln County PLSS Corner Remonumentation and GPS Services project, I found a 6" x 6" black granite monument near the computed position provided by Lincoln County. The monument is ±22 feet south and ±28 feet east of the southeasterly bank of the Wisconsin River. I established 4 new reference monuments as shown below.

A-E 7.08(3)(c)(d) Plan view of corner with references to at least 4 witness monuments.

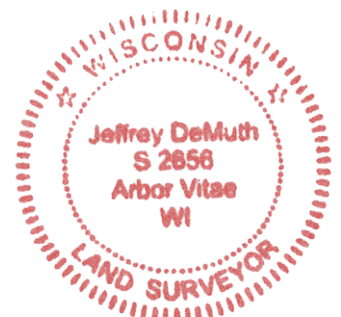


A-E 7.08(3)(e) 1852 Surveyor set a post, 1941 Surveyor did not describe monument, 1972 Surveyor found a stone monument, 2015 Surveyor found a granite monument. I found a granite stone.

A-E 7.08(3)(f) I accept this monument as a FOUND PERPETUATED LOCATION of the corner.

A-E 7.08(3)(g)(h) This corner was not determined through lost-corner-proportionate methods.

A-E 7.08(3)(i) I, Jeffrey L. DeMuth, Professional Land Surveyor No. S-2656, hereby certify that the corner location on this record was determined by the Lincoln County Surveyor, and the monuments found or set as shown hereon were measured by me or under my direction and control, and that this U.S. Public Land Survey Monument Record is correct and complete to the best of my knowledge, and belief.



SIGNATURE

September 16, 2022
DATE