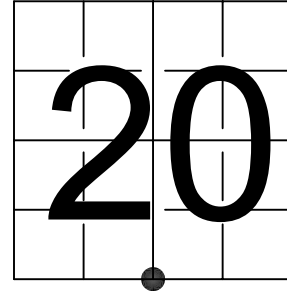


# U S PUBLIC LAND SURVEY MONUMENT RECORD

NOTE: This form is intended and designed to fulfill all requirements of Wisconsin Administrative Code, Chapter A-E 7.08 U.S. Public Land Survey Monument Record (3) (a-i)

A-E 7.08(3)(a) Identity of corner:  
SOUTH 1/4 CORNER SECTION 20,  
TOWNSHIP 33 NORTH,  
RANGE 05 EAST OF THE 4TH PM,  
TOWN OF HARDING,  
COUNTY OF LINCOLN

WISCORS - LINCOLN COUNTY  
N: 174,712.147 USft (174,712.391)  
E: 340,954.169 USft (340,953.887)  
Datum: NAD83 (2011)  
GNSS Method RTN - Direct  
GNSS Control WISCORS VRS



The coordinate value shown has been verified by the average of two or more GPS observations at a markedly different time. Coordinates shown in parenthesis are provided by Lincoln County.

A-E 7.08(3)(b)

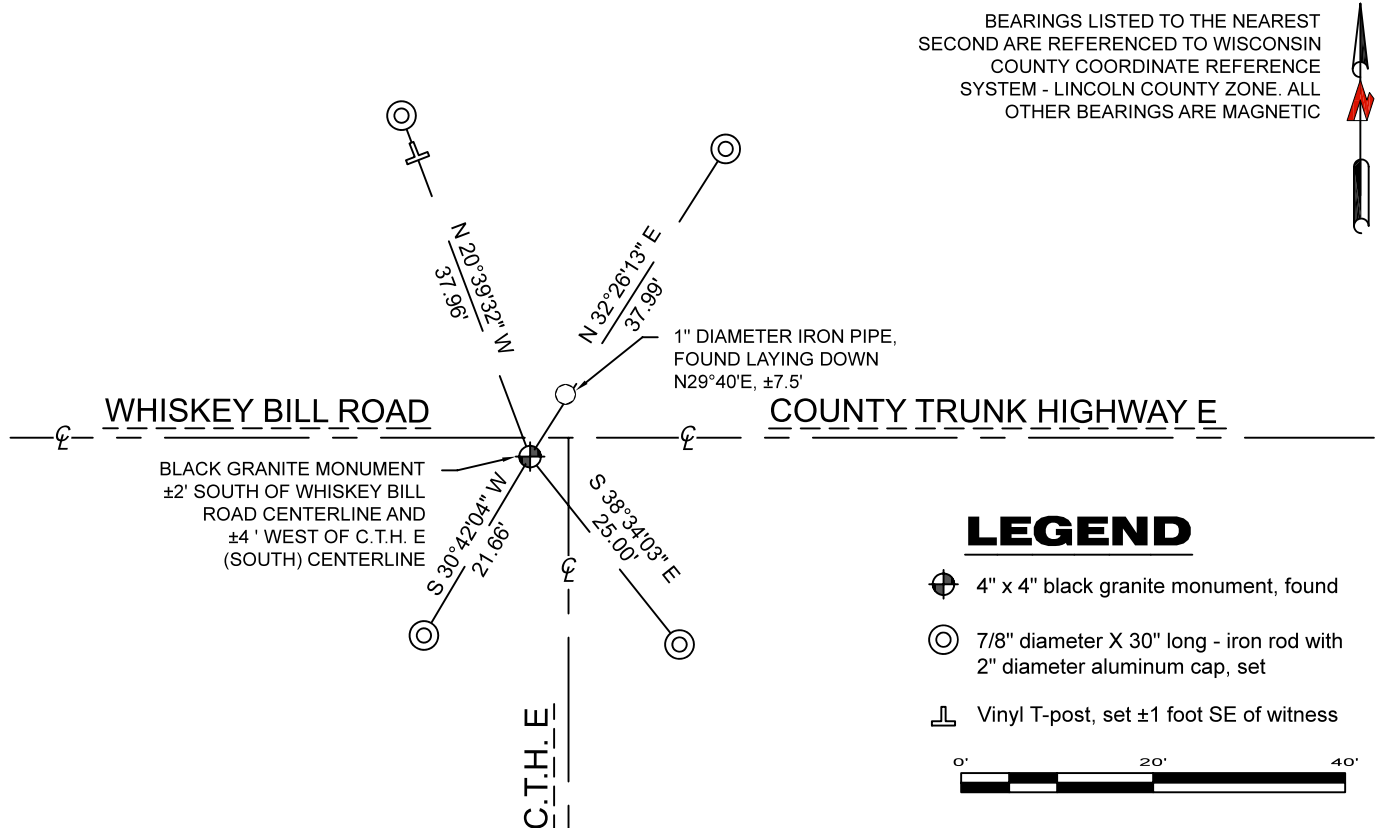
Original Surveyor: Jackson L. Prentice

|                         |            |                   |                       |            |          |
|-------------------------|------------|-------------------|-----------------------|------------|----------|
| Date of Original Survey | Commenced: | November 9, 1854  | Original Accessories: |            |          |
|                         | Completed: | November 21, 1854 | Pine                  | 16 S 21° W | 16 Links |
|                         |            |                   | Pine                  | 17 N 18° E | 26 Links |

March 16, 1972 - Genisot and Associates, Inc. - indicate a symbol at this position with the notation "S 1/4 SEC. 20" on Map L465A.

May 17, 2022 - While performing the 2022 Lincoln County PLSS Corner Remonumentation and GPS Services project, I found a 4" x 4" black granite monument near the computed position provided by Lincoln County. The monument is 2 feet south of Whiskey Bill Road centerline, 4 feet west of C.T.H. E centerline (south), and 9" below road grade. I established 4 new reference monuments as shown below.

A-E 7.08(3)(c)(d) Plan view of corner with references to at least 4 witness monuments.

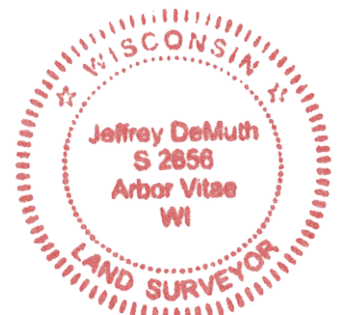


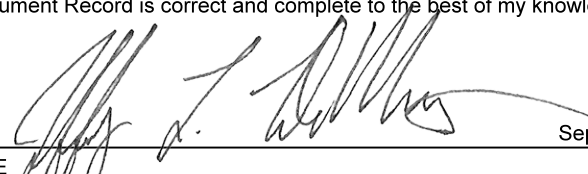
A-E 7.08(3)(e) 1854 Surveyor set a post, 1972 Surveyor did not describe the monument. I found a granite stone.

A-E 7.08(3)(f) I accept this monument as a FOUND PERPETUATED LOCATION of the corner.

A-E 7.08(3)(g)(h) This corner was not determined through lost-corner-proportionate methods.

A-E 7.08(3)(i) I, Jeffrey L. DeMuth, Professional Land Surveyor No. S-2656, hereby certify that the corner location on this record was determined by the Lincoln County Surveyor, and the monuments found or set as shown hereon were measured by me or under my direction and control, and that this U.S. Public Land Survey Monument Record is correct and complete to the best of my knowledge, and belief.



SIGNATURE  DATE September 16, 2022