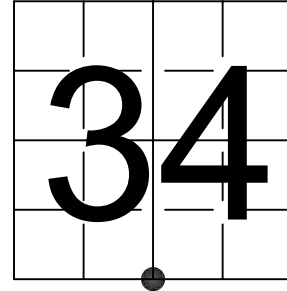


# U S PUBLIC LAND SURVEY MONUMENT RECORD

NOTE: This form is intended and designed to fulfill all requirements of Wisconsin Administrative Code, Chapter A-E 7.08 U.S. Public Land Survey Monument Record (3) (a-i)

A-E 7.08(3)(a) Identity of corner:  
 SOUTH 1/4 CORNER SECTION 34,  
 TOWNSHIP 31 NORTH,  
 RANGE 06 EAST OF THE 4TH PM,  
 TOWN OF SCOTT,  
 COUNTY OF LINCOLN

WISCORS - LINCOLN COUNTY  
 N: 100,467.448 USft (100,467.384)  
 E: 383,369.711 USft (383,369.732)  
 Datum: NAD83 (2011)  
 GNSS Method RTN - Direct  
 GNSS Control WISCORS VRS



The coordinate value shown has been verified by the average of two or more GPS observations at a markedly different time. Coordinates shown in parenthesis are provided by Lincoln County.

A-E 7.08(3)(b)

Original Surveyor: James M. Marsh

Date of Original Survey Commenced: May, 1851  
 Completed: May, 1851

Original Accessories:  
 Sugar 8 N 52° E 43 Links  
 Hemlock 18 N 30° W 66 Links  
 Birch 16 N 49° W 34 Links  
 Hemlock 18 N 75° W 39 Links

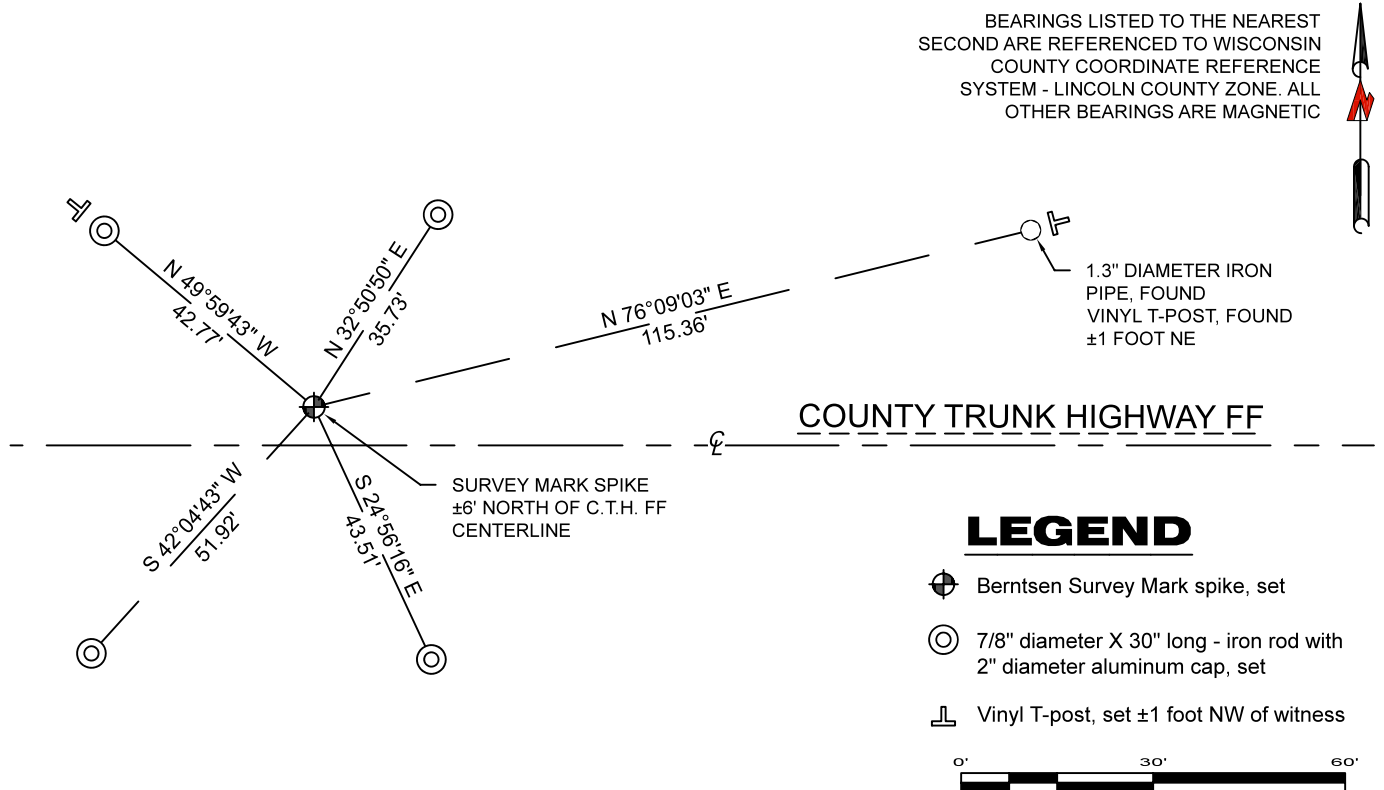
June 20, 1903 - Surveyors: L. Kleinschmidt and Herman Rusch - indicate they set a stone at this position on Map M56B.

June 18, 2019 - Surveyor 3148 - Jason J. Pflieger - indicates this position as "existing stone, coordinate provided by County Surveyor" on Map S695B.

April 19, 2022 - While performing the 2022 Lincoln County PLSS Corner Re monumentation and GPS Services project, I went to the coordinate position provided by Lincoln County, I made a careful search of the area and found no evidence of the corner or witnesses. The County provided location is 6 feet north of C.T.H. FF centerline.

Under the direction of Lincoln County, I restored the position using County provided coordinates and set a Berntsen Survey Mark steel spike 3" long with a 1" diameter dimpled head. I established 5 new reference monuments as shown below.

A-E 7.08(3)(c)(d) Plan view of corner with references to at least 4 witness monuments.



A-E 7.08(3)(e) 1851 Surveyor set a post, 1903 Surveyor set a stone, 2019 Surveyor refers to a stone by County Surveyor testimony. I set a Berntsen Survey Mark steel spike at coordinates provided by Lincoln County.

A-E 7.08(3)(f) I restored the corner through ACCEPTANCE OF AN OBLITERATED LOCATION.

A-E 7.08(3)(g)(h) This corner was not determined through lost-corner-proportionate methods.

A-E 7.08(3)(i) I, Jeffrey L. DeMuth, Professional Land Surveyor No. S-2656, hereby certify that the corner location on this record was determined by the Lincoln County Surveyor, and the monuments found or set as shown hereon were measured by me or under my direction and control, and that this U.S. Public Land Survey Monument Record is correct and complete to the best of my knowledge, and belief.



SIGNATURE \_\_\_\_\_ DATE September 16, 2022