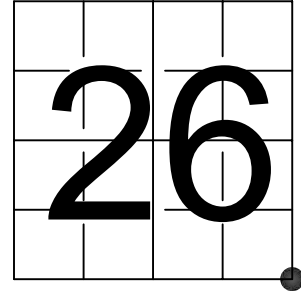


# U S PUBLIC LAND SURVEY MONUMENT RECORD

NOTE: This form is intended and designed to fulfill all requirements of Wisconsin Administrative Code, Chapter A-E 7.08 U.S. Public Land Survey Monument Record (3) (a-i)

A-E 7.08(3)(a) Identity of corner:  
 SOUTHEAST CORNER SECTION 26,  
 TOWNSHIP 31 NORTH,  
 RANGE 06 EAST OF THE 4TH PM,  
 TOWN OF SCOTT,  
 COUNTY OF LINCOLN

WISCORS - LINCOLN COUNTY  
 N: 105,712.979 USft (105,713.001)  
 E: 391,330.659 USft (391,330.679)  
 Datum: NAD83 (2011)  
 GNSS Method RTN - Direct  
 GNSS Control WISCORS VRS



The coordinate value shown has been verified by the average of two or more GPS observations at a markedly different time. Coordinates shown in parenthesis are provided by Lincoln County.

A-E 7.08(3)(b)

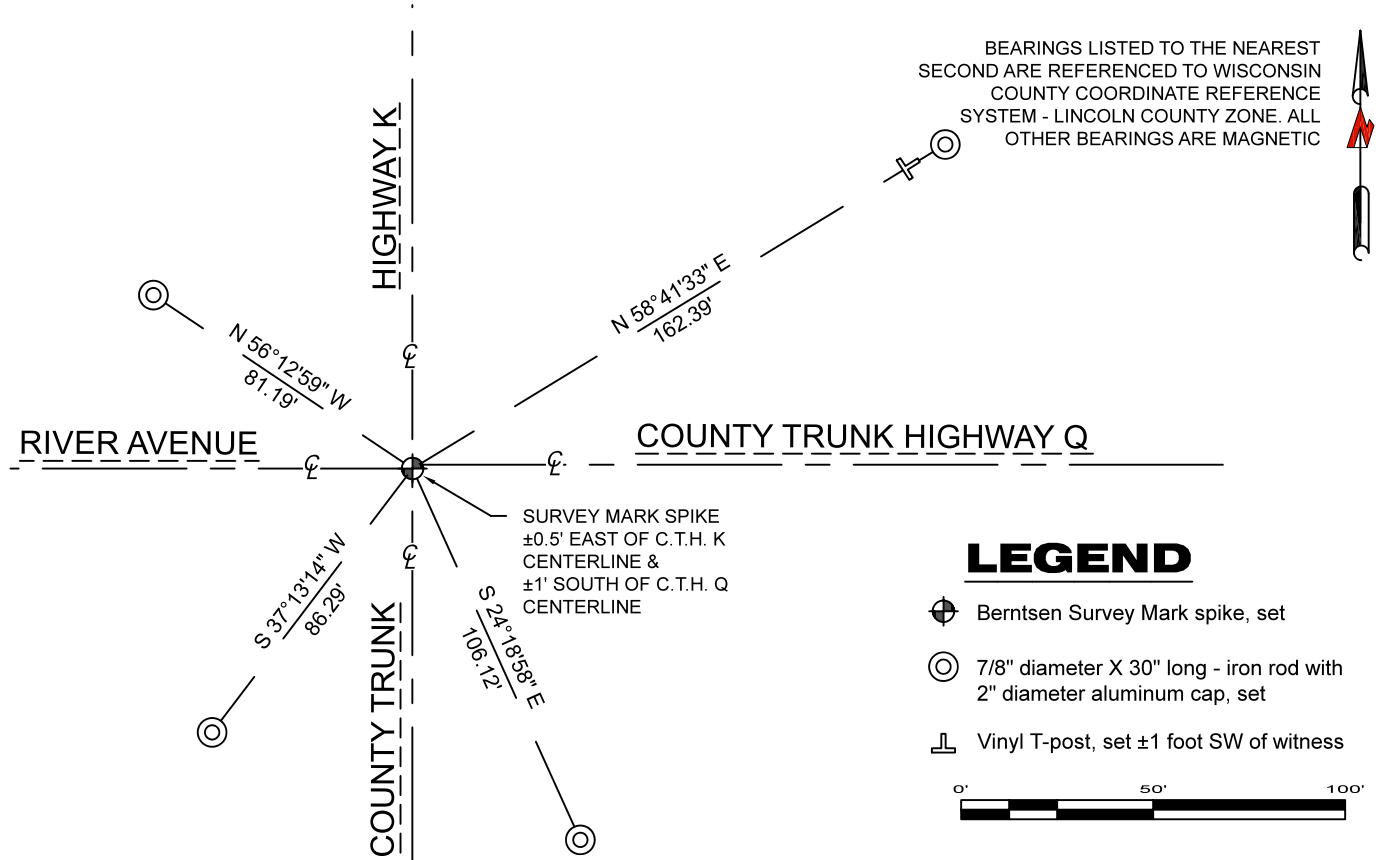
Original Surveyor: Albert G. & Fredrick.S. Ellis

Date of Original Survey	Commenced:	March 9, 1852	Original Accessories:		
	Completed:	March 9, 1852	Hemlock	24	N 35° E 7 Links
			Hemlock	18	N 24° W 16 Links

June 20, 1903 - Surveyors: L. Kleinschmidt and Herman Rusch - indicate they set a stone at this position on Map M56B.

April 19, 2022 - While performing the 2022 Lincoln County PLSS Corner Remonumentation and GPS Services project, I went to the coordinate position provided by Lincoln County, I made a careful search of the area and found no evidence of the corner or witnesses. The County provided location is 0.5 feet east of C.T.H. K centerline, 1' south of the C.T.H. Q centerline, and on the centerline of River Avenue. Under the direction of Lincoln County, I restored the the corner using coordinates provided by Lincoln County and set a Berntsen Survey Mark steel spike 3" long with a 1" diameter dimpled head. I established 4 new reference monuments as shown below.

A-E 7.08(3)(c)(d) Plan view of corner with references to at least 4 witness monuments.

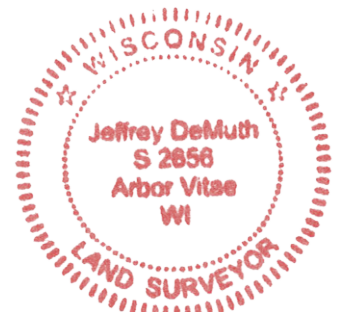


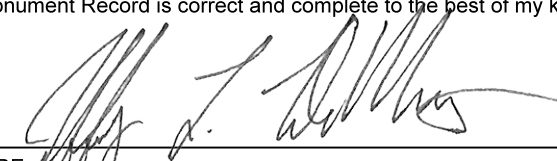
A-E 7.08(3)(e) 1852 Surveyor set a post, 1903 Surveyor set a stone. I set a Berntsen Survey Mark steel spike at coordinates provided by Lincoln County.

A-E 7.08(3)(f) I restored the corner through ACCEPTANCE OF AN OBLITERATED LOCATION.

A-E 7.08(3)(g)(h) This corner was not determined through lost-corner-proportionate methods.

A-E 7.08(3)(i) I, Jeffrey L. DeMuth, Professional Land Surveyor No. S-2656, hereby certify that the corner location on this record was determined by the Lincoln County Surveyor, and the monuments found or set as shown hereon were measured by me or under my direction and control, and that this U.S. Public Land Survey Monument Record is correct and complete to the best of my knowledge, and belief.



SIGNATURE  DATE September 16, 2022