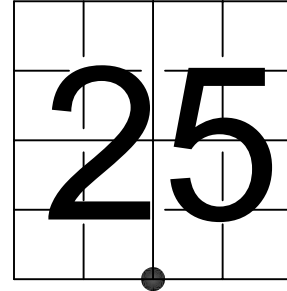


U S PUBLIC LAND SURVEY MONUMENT RECORD

NOTE: This form is intended and designed to fulfill all requirements of Wisconsin Administrative Code, Chapter A-E 7.08 U.S. Public Land Survey Monument Record (3) (a-i)

A-E 7.08(3)(a) Identity of corner:
 SOUTH 1/4 CORNER SECTION 25,
 TOWNSHIP 31 NORTH,
 RANGE 06 EAST OF THE 4TH PM,
 TOWN OF SCOTT,
 COUNTY OF LINCOLN

WISCRS - LINCOLN COUNTY
 N: 105,697.203 USft (105,697.110)
 E: 393,972.869 USft (393,972.910)
 Datum: NAD83 (2011)
 GNSS Method RTN - Direct
 GNSS Control WISCORS VRS



The coordinate value shown has been verified by the average of two or more GPS observations at a markedly different time. Coordinates shown in parenthesis are provided by Lincoln County.

A-E 7.08(3)(b)

Original Surveyor: Albert G. & Fredrick.S. Ellis

Date of Original Survey	Commenced:	March 9, 1852	Original Accessories:		
	Completed:	March 9, 1852	Hemlock	10	N 38° W 7 Links
			Birch	9	S 51° W 29 Links

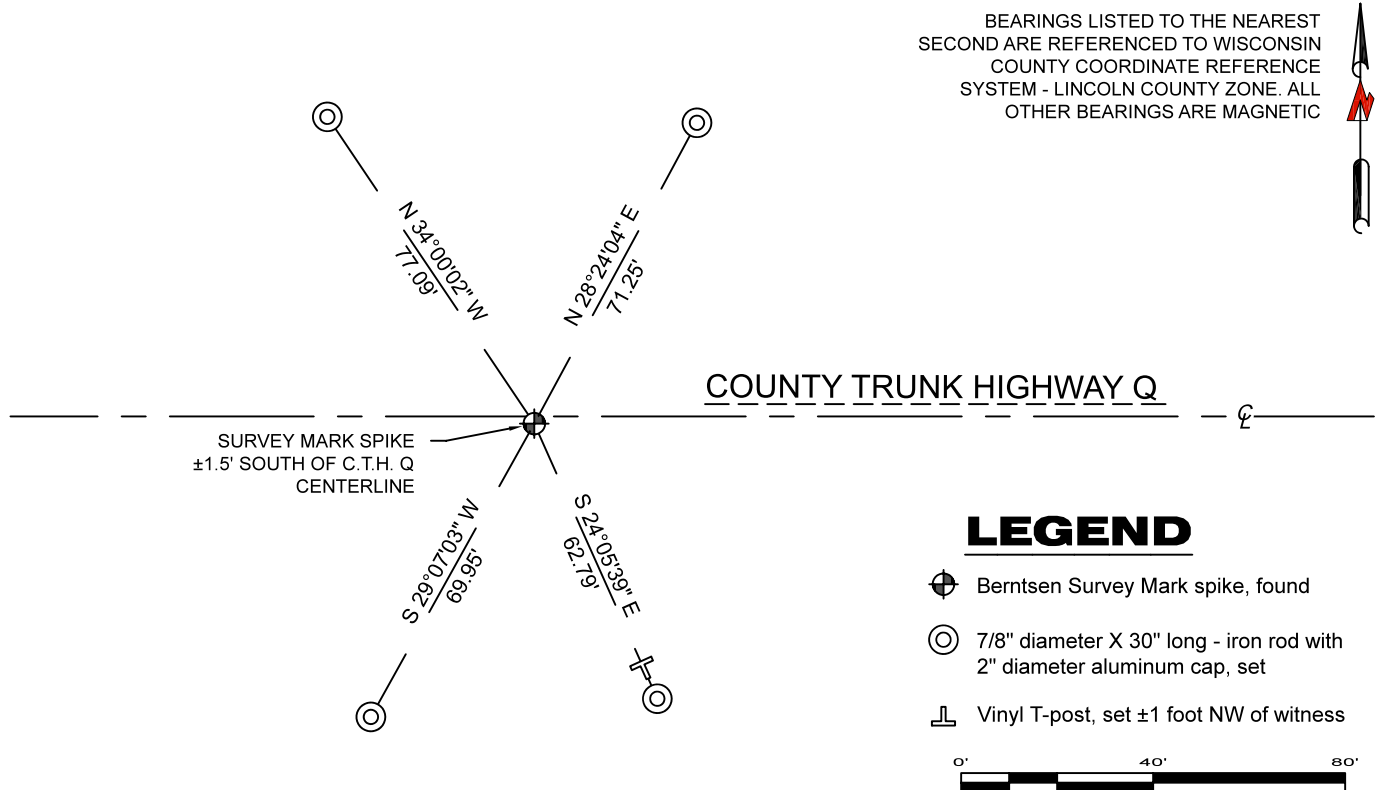
June 20, 1903 - Surveyors: L. Kleinschmidt and Herman Rusch - indicate they set a stone at this position on Map M56B.

August 29, 2005 - Surveyor 2142 - David A. Renaud - indicates this position as "SMP found" on Map M507B.

March 8, 2016 - Surveyor 1619 - Gary R. Krueger - indicates this position as "existing PK nail" on Map S697B.

April 19, 2022 - While performing the 2022 Lincoln County PLSS Corner Remonumentation and GPS Services project, I found a Berntsen Survey Mark steel spike near the computed position provided by Lincoln County. The monument is 1.5 feet south of C.T.H. Q centerline. I established 4 new reference monuments as shown below.

A-E 7.08(3)(c)(d) Plan view of corner with references to at least 4 witness monuments.

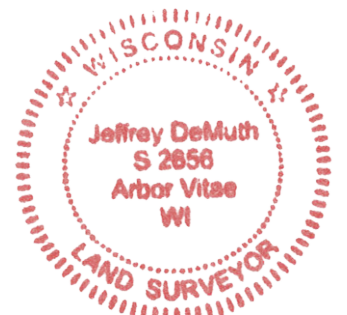


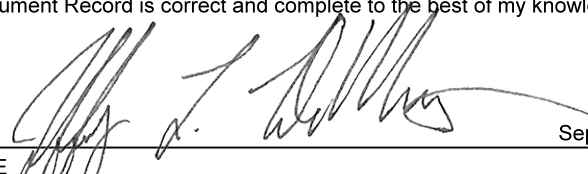
A-E 7.08(3)(e) 1852 Surveyor set a post, 1903 Surveyor set a stone, 2005 Surveyor found an SMP, and 2016 Surveyor found a PK nail. I found a Berntsen Survey Mark steel spike.

A-E 7.08(3)(f) I accept this monument as a FOUND PERPETUATED LOCATION of the corner.

A-E 7.08(3)(g)(h) This corner was not determined through lost-corner-proportionate methods.

A-E 7.08(3)(i) I, Jeffrey L. DeMuth, Professional Land Surveyor No. S-2656, hereby certify that the corner location on this record was determined by the Lincoln County Surveyor, and the monuments found or set as shown hereon were measured by me or under my direction and control, and that this U.S. Public Land Survey Monument Record is correct and complete to the best of my knowledge, and belief.




 SIGNATURE _____ DATE September 16, 2022