

Attachment to Tie Sheet E-3, T34N, R8E

43408060020

I visited the corner on 5/23/2018 to verify the corner and reference tie monumentation. I found all 4 ties from Dennis B. Roberts tie sheet (12/04/2002). All 4 ties crossed well and agreed with the 6"x 6" granite position.

NOTE

- The trees had grown over the nails, I had to open blazes to expose the nails for measurements.
- Observed coordinates differ from existing coordinates. The coordinate values that I observed were NAD 83(2011) WISCORS, Lincoln County, US Survey Feet:

N 221896.450

E 431297.390

Anthony R. Dallman 5/30/18

Anthony R. Dallman, PLS-2405

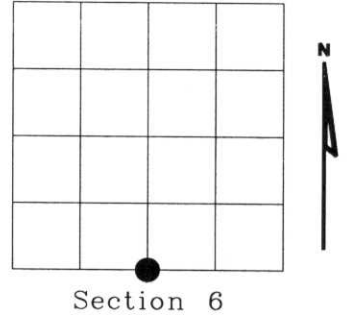
Lincoln County Surveyor



U.S. PUBLIC LAND SURVEY MONUMENT RECORD

NOTE: This form is intended and designed to fulfill all requirements of Wisconsin Administrative Code, Chapter A-E 7.08 U.S. Public Land Survey Monument Record (3)(a)(b)(c)(d)(e)(f)(g)(h)(i). An additional sheet may be added if necessary to conform with said requirements.

(a) Corner location: Township 34 North
 Range 08 East
 Town of HARRISON
 LINCOLN County, Wisconsin



(b)(f)(g)(h) Description of monument found at this corner and if it was accepted, state all evidence (material, testimonial, occupational, plats, records, other monuments) used as a basis for accepting. If not accepted or if nothing was found, state evidence used as basis for establishing location. If reestablished through lost corner proportionate methods, indicate all monuments, distances and directions used to establish. Indicate type of monument found or set and sign post.

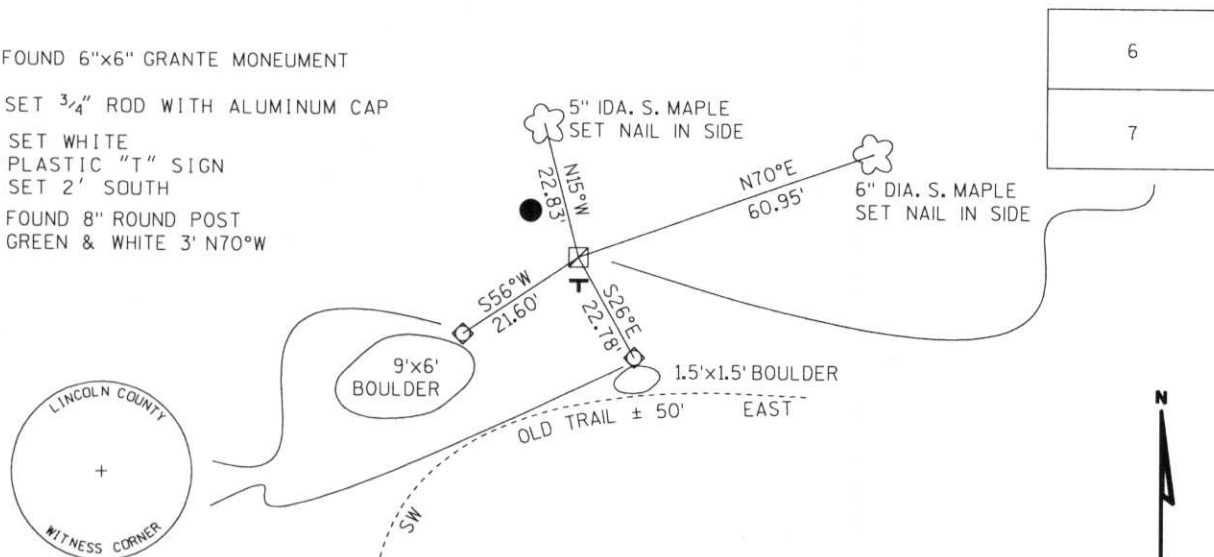
- 1854 - Original corner set by Jackson L. Prentice.
- 1938 - Frances Fuchs found post witnessed by original BT. Set 6"x6" granite stone in rock mound.
 BT: 12" Hemlock stump N52°W 30.6 Lks.
 9'x6' Boulder 1.5' above ground S56°W, to nearest edge 32.9 Lks
- 2002 - I found 6"x6" granite stone in rock mound 6" round wooden post N70°W, 3'.
 Boulder 9'x6' 1.5' above ground S56°W 21.71'

Witnessed corner as shown below.

RECEIVED AT LINCOLN COUNTY
 COURTHOUSE THIS 11TH DAY
 OF December 20 02
Tony Dahl
 LAND INFORMATION OFFICE

(c)(d)(e) Plan view of corner with ties to at least 4 witness monuments. If in disagreement with previously established corner, show the distances between the two corners and also indicate the ties to the disputed corner.

- FOUND 6"x6" GRANITE MONUMENT
- SET 3/4" ROD WITH ALUMINUM CAP
- SET WHITE
- PLASTIC "T" SIGN
- SET 2' SOUTH
- FOUND 8" ROUND POST
- GREEN & WHITE 3' N70°W



(i) I, Dennis B. Roberts, Registered Land Surveyor *S-1863, hereby certify that the corner location on this record was determined by me or under my direction and control and that this U.S. Public Land Survey Monument Record is correct and complete to the best of my knowledge and belief.

Dennis B. Roberts 12-04-02
 Signature Date



Index No. E-3