

# Attachment to Tie Sheet A,B-9, T34N, R6E

## 43406053500

I visited the corner on 6/04/2018 to verify the corner and reference tie monumentation. I found the Berntsen monument and all 4 ties from Thomas Radenz tie sheet (01/08/2002). All 4 ties crossed very well and agreed with existing monument.

### NOTE

- Berntsen is 5' SOUTH of 1" Rebar, tie sheet text says that the monument was set 5' North of found 1" Rebar.

*Anthony R. Dallman 6/08/18*

Anthony R. Dallman, PLS-2405

Lincoln County Surveyor



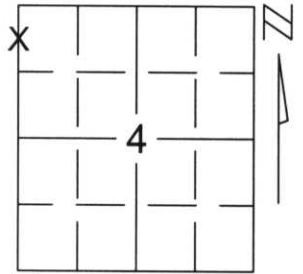
# U.S. PUBLIC LAND SURVEY MONUMENT RECORD

Note: This form is intended and designed to fulfill all requirements of Wisconsin Administrative Code, Chapter A-E 5.02, U.S. Public Land Survey Monument Record (3)(a)(b)(c)(d)(e)(f)(g)(h)(i). An additional sheet may be added if necessary to conform with said requirements.

(a) Corner location: Township 34 North  
Range 6 East

Town/City/Village BRADLEY

County LINCOLN



Section 4

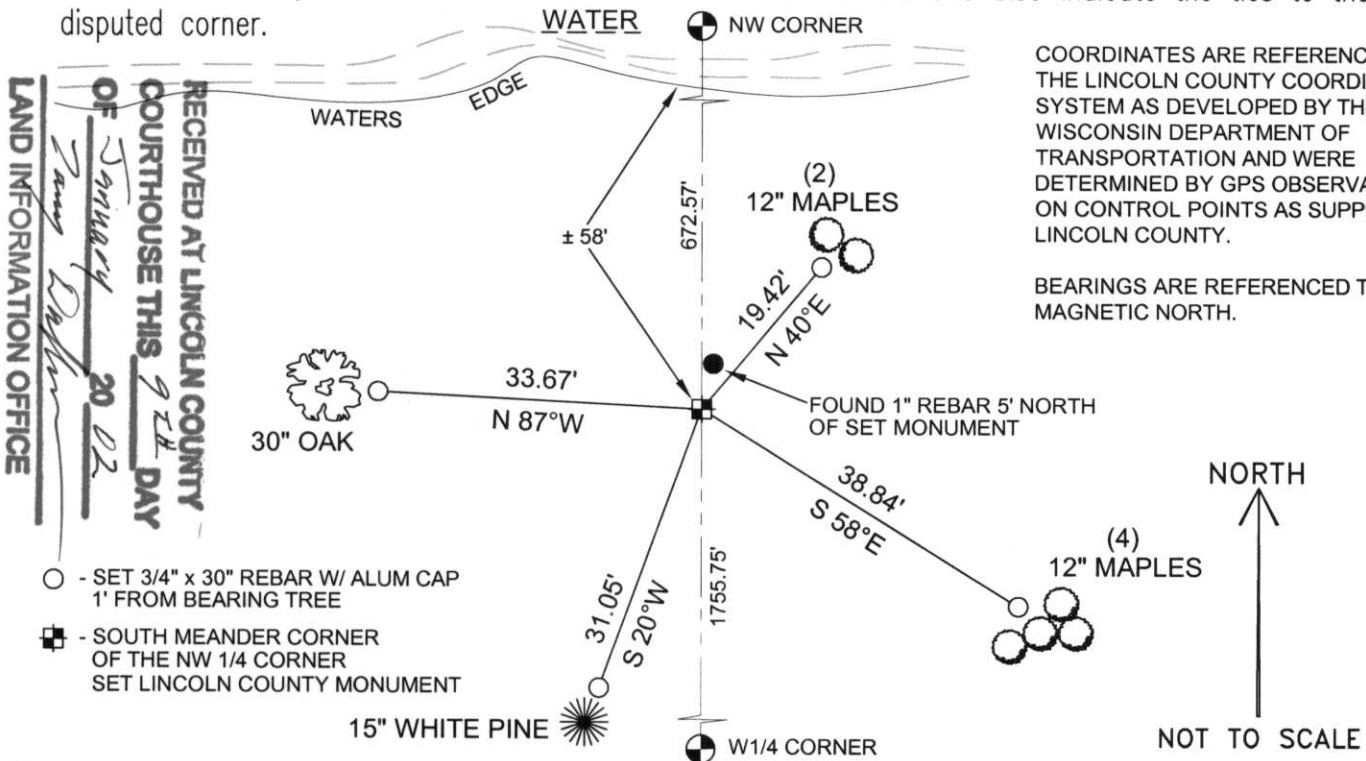
(b)(f)(g)(h) Description of monument found at this corner and if it was accepted, state all evidence (material, testimonial, occupational, plats, records, other monuments) used as a basis for accepting. If not accepted or if nothing was found, state evidence used as basis for establishing location. If reestablished through lost corner proportionate methods, indicate all monuments, distances and directions used to establish.

THE NORTHWEST CORNER OF SECTION 4 FALLS IN THE WATER. WE FOUND TWO PIPES ON THE NORTH LINE OF THE NORTHEAST 1/4 OF SECTION 5 AND THREE PIPES ON THE EAST LINE OF THE NORTHEAST 1/4 OF SECTION 5 FROM LESTER SCHMIDT'S PLAT OF SURVEY.

WE INTERSECTED A LINE FROM THE NORTH 1/4 CORNER OF SECTION 5 THROUGH THE FOUND IRON PIPES ON THE NORTH LINE OF THE NORTHEAST 1/4 OF SECTION 5 AND FROM THE EAST 1/4 CORNER OF SEC. 5 THROUGH THE FOUND IRONS ALONG THE EAST LINE OF THE NORTHEAST 1/4 OF SECTION 5.

WE SET A LINCOLN COUNTY MONUMENT 5 FEET NORTH OF FOUND 1" REBAR FOR MEANDER CORNER AND TIED OUT CORNER.

(c)(d)(e) Plan view of corner with ties to at least 4 witness monuments. If in disagreement with previously established corner, show the distances between the two corners and also indicate the ties to the disputed corner.



COORDINATES ARE REFERENCED TO THE LINCOLN COUNTY COORDINATE SYSTEM AS DEVELOPED BY THE WISCONSIN DEPARTMENT OF TRANSPORTATION AND WERE DETERMINED BY GPS OBSERVATIONS ON CONTROL POINTS AS SUPPLIED BY LINCOLN COUNTY.

BEARINGS ARE REFERENCED TO MAGNETIC NORTH.

NORTH  
NOT TO SCALE

(i) I, Thomas A. Radenz, RLS certify that the corner location on this record was determined by me or under my direction and control and that this U.S. Public Land Survey Monument Record is correct and complete to the best of my knowledge and belief.

Signature Thomas A. Radenz Date 1/8/2002



Index No. AB-9